

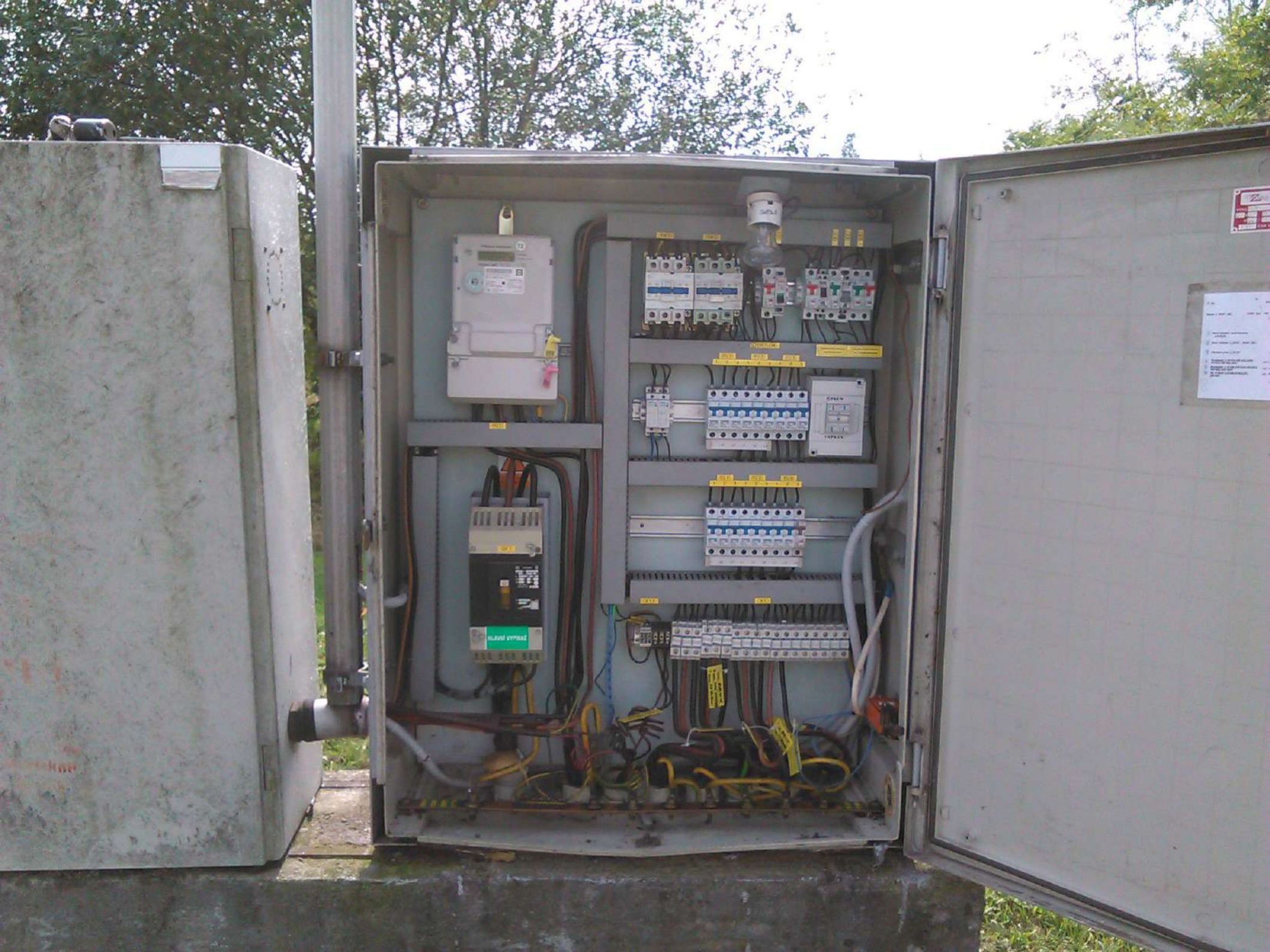


RVCP - 59



NEKADNÍ PRÁCE
PŘI PRÁCI
VYKONÁVÁNÍ
PŘEDNÍM

RVO 59



Třífázový elektroměr

13



0 17 1929 kWh T1
L1 L2 L3

Naměřená
hodnota energie

Aktivní tarif T1 T2



9041061020175626
ZE312.D0B1T022-010



2.15-5(80)A
-10/+70°C

No.1020175626

CE M13 1383

3x230/400V 50Hz
10 000 imp./kWh
100 imp./kWh
ICM 221/09-4694
CIA 11/12
Rok 2012

RVOP 60



Minich Statistického města
Frydek-Místek 29

**ZÁKAZ
VÝSTAVY**

Číslo: 30
11. pos. 721
odřídil:



RVO 60

 **POZOR
ELEKTRICKÉ
ZAŘÍZENÍ !**

 **NEHAS VODOU ANI
PĚNOVÝMI PŘÍSTROJI**



The interior of the electrical cabinet is illuminated by a fluorescent light fixture at the top. It contains several rows of electrical components: a top row with a circuit breaker and a meter; a middle row with two terminal blocks labeled 'FAZ' and 'N'; a bottom row with another terminal block and a circuit breaker. A white box labeled 'HLAVNÍ JISTIČ' (Main Switch) is mounted on the right side. Numerous wires are connected to the terminal blocks and are labeled with small white tags. A handwritten note 'KUGLE ZAP. P148871' is visible near the middle terminal block.

 **POZOR!
ZPĚTNÝ PROUD**

Třífázový elektroměr

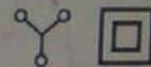
11



0060448 kWh T1
L1 L2 L3

Naměřená
hodnota energie

Aktivní tarif T1 T2



9041061074279695
ZE312.D0B1T022-010



0,15-5(80)A
-40/+70°C
No.1074279695



3x230/400V 50Hz
10 000 imp./kWh
100 imp./kWh
TCM 221/09-4694
Cl.A 12/11

CE M11 1383

Rok 2011

RVOP - 61



RVON 61-1



RVO 61



Table with 2 columns and 3 rows, likely a technical specification or identification label.



Yellow identification tag attached to a cable.

Yellow identification tag attached to a cable.

N 51-1



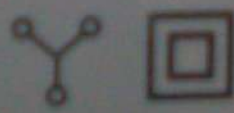
Třífázový elektroměr

11

Naměřená
hodnota energie

0045937 kWh T1
L1 L2 L3

Aktivní tarif T1 T2



9041061074280765
ZE312.D0B1T022-010



0,15-5(80)A
-40/+70°C

3×230/400V 50Hz
10 000 imp./kWh
100 imp./kWh
TCM 22 19 4694

RVOP-62

RVOP

62



RVOO 62-1

Handwritten graffiti in black ink, possibly reading 'MWD'.



RVO 62

11

Energy meter with a digital display showing '11' and a circular dial below it.

POZOR! NEKORNOU VYUŽITÍM
MŮŽE DOJÍT KE ZKRAZOVÁNÍ
A NEKORNOU VYUŽITÍM
MŮŽE DOJÍT KE ZKRAZOVÁNÍ
A NEKORNOU VYUŽITÍM

Four vertical rows of terminal blocks. Each block has four terminals. Labels on the blocks include 'GEZ 16A', '16A', '16A', and '16A'. Some labels also mention '16A' and '16A'.

Two transformers labeled 'S1' and 'S2' mounted on a metal plate. They are connected to various wires.

Four white relays and two grey relays mounted on a metal plate. They are connected to various wires.

Terminal block with a digital display showing '0.00' and several terminals. It is connected to various wires.

Terminal block with a black label and several terminals. It is connected to various wires.

Main switch mechanism with a handle and a label 'HLAVNÍ VYPÍNAČ'.

HLAVNÍ VYPÍNAČ

HLAVNÍ VYPÍNAČ

Trifázový elektroměr

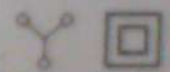
11



0 1 82 19 T1

Naměřená
hodnota energie

Aktivní tarif T1 T2




 9041061073812448
 ZE312.D0B1T022-010
 0,15-5(80)A
 -40/+70°C
 No.1073812448
 CE M11 1383


 3x230/400V 50Hz
 10 000 imp./kWh
 100 imp./kWh
 TCM 221/09-4894
 CIA 08/11
 Rok 2011

RVOP-63

UP
"MIR"
Majetek Státního města
Frýdek-Místek

ZAKAZ
VÝLEPU!

"MIR"
Ghetto
BLASTER
UP
Ghetto
BLASTER

RVO 63

Průběh tohoto zákazu



M

12

kWh

0 4 4 9 0 0 6

K420iNNs
3 x 230/400 V
4600/V13000
R_A = 250 imp/kWh

ELEKTROMĚR
R_L = 10000 imp/kWh
TCM 221/96-2318

93001059
5(100) A
50 Hz
2000
tř. 2

ENERMET
MADE IN FINLAND

CE
VÝPADEK NAPĚTÍ

9530350093001059

R_L = 500 imp/kWh

RVOP-66

RVOP-66

ERO

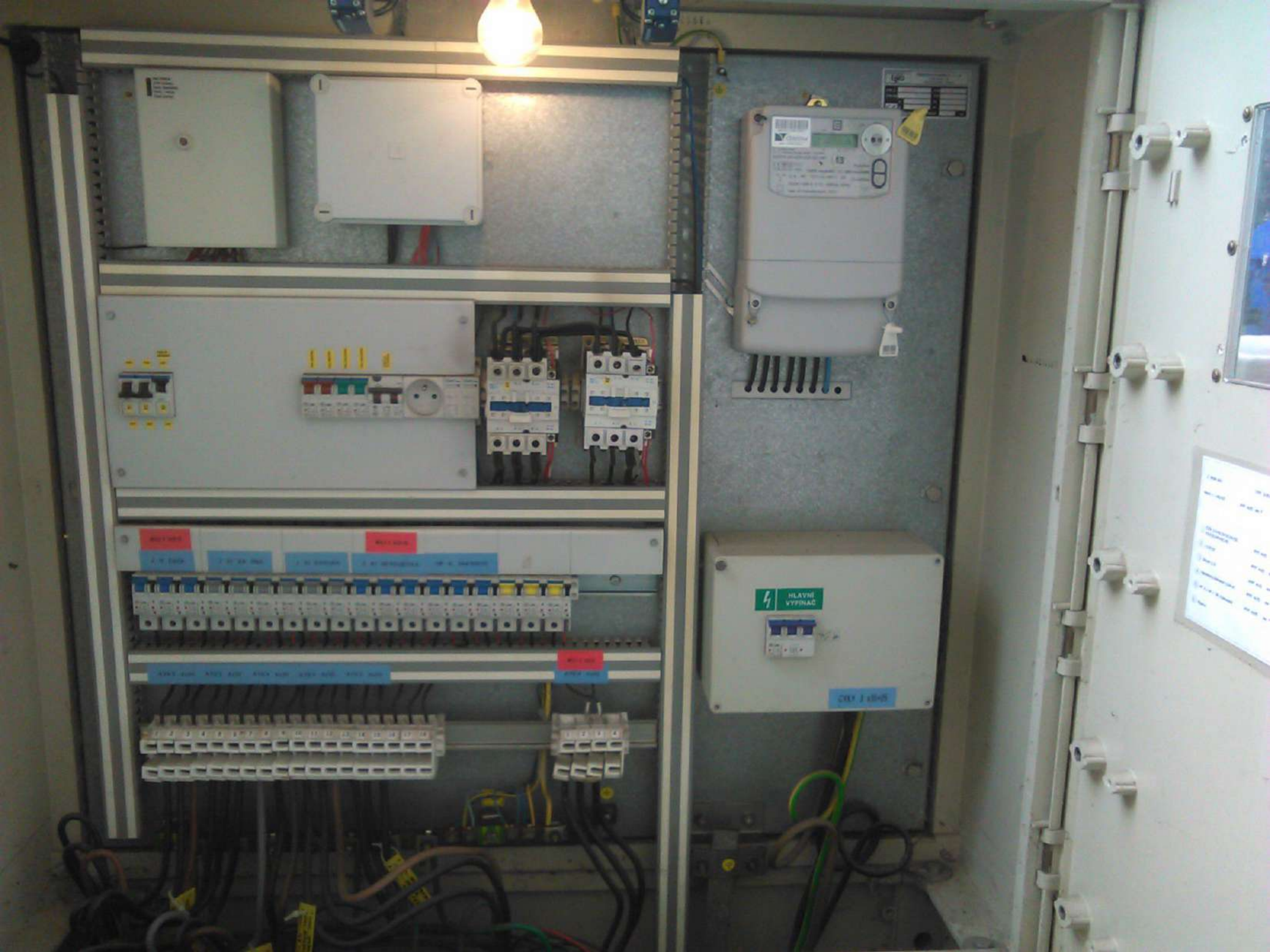


RVON 66

ERO



RVO 66



ET

VYR. C.	2266/6	RO
ČSN EN	50439-1	TYP
V	400/230	Hz
		IP
		IOS

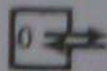


1370133833

daisy
TECHNOLOGY
1370133833



Load



1
2 T: 10055567
3



m error
Active energy tariff 1..2 [kWh]
-AD-U2H-V2X-G1-OK1

P R T2 T1

13

Function

M13 1432
21/10 - 4781 10000 imp/kWh \sphericalangle 1000 imp/kWh

cl. A M1 -33°C to +60°C E2 Scroll/Set

3X230 / 400 V, 0.15 - 5(80)A, 50Hz

Year of manufacture: 2013



RVO

68



RVO 68 - rekonstrukce

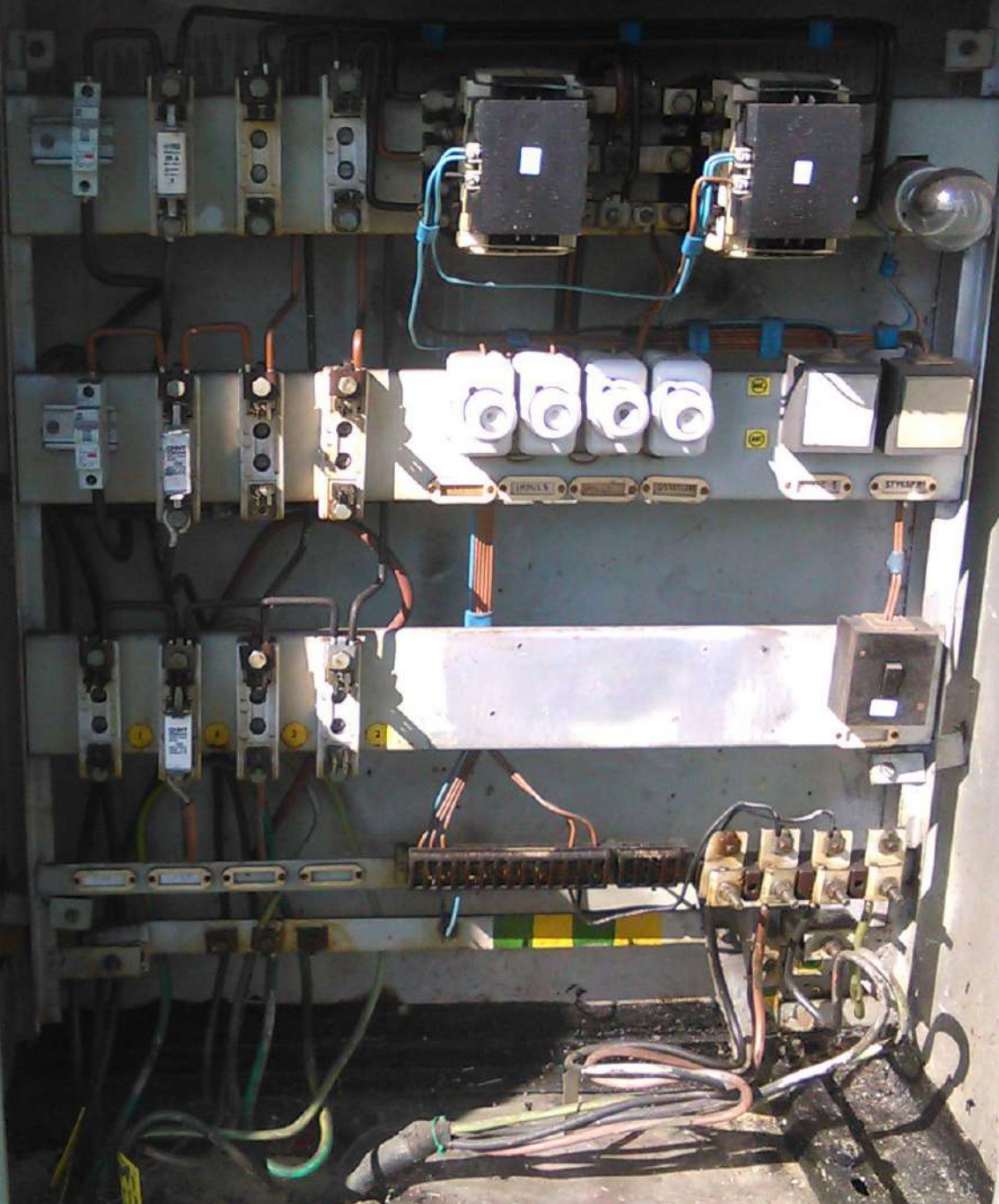


SWK
INSTRUKCJA
WYKONANIA
PRAC
W ZWIĄZKU Z
MONTAŻEM I
WYKONANIEM
PRAC
W ZWIĄZKU Z
MONTAŻEM I
WYKONANIEM



WYKONANO

WYKONANO





0041071470194055

daisy
ENERGOMETRY
CNo 1470194055

Zatížení



T 100 10837

P R T2 T1

F - Systémová chyba
T1_2 - Aktivní tarif 1_2 [kWh]
ADX10-AD-U2H-V2X-G1-OK1

14

CE M14 1432

TCM 221/107-4781 10000 imp/kWh Σ 1000 imp/kWh

Funkce

cl. A M1 3K6

E2 Procházet

3~ 230 / 400 V, 0.15 - 5(80)A, 50Hz

Rok výroby : 2014

-33°C to +60°C
(mezí rozsah provozu)



RVO 69



RVOP-69

АЭ МОСТ

4.11.2023

⚡
Mishanka *

⚡

⚡

⚡
KOKOT

koniko,
Cei
Konik x Danicud = *

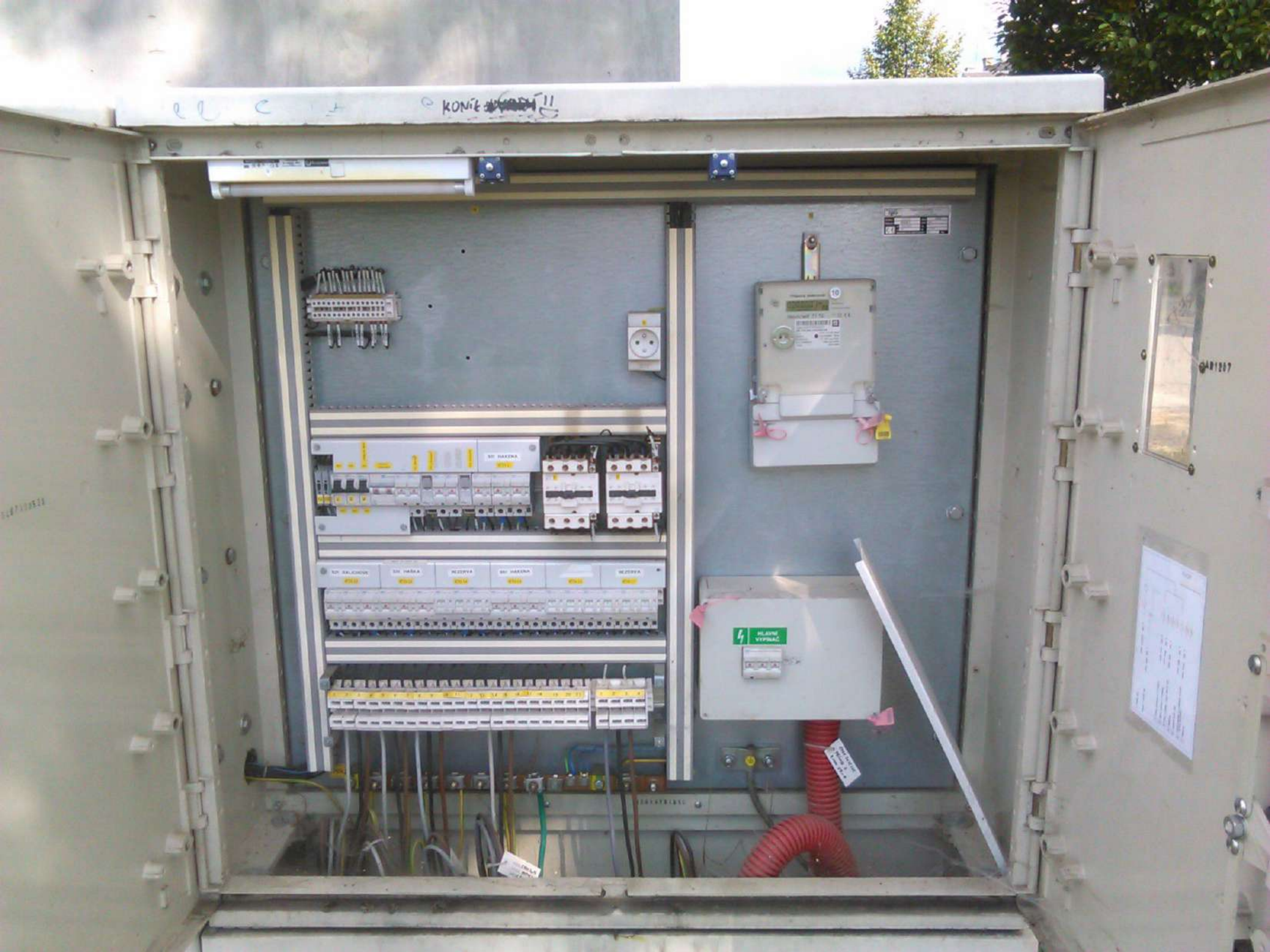
Handwritten scribbles

konik
na male ga
bjo
Ani pida
konik
je
traj

ZAVT.
+
POR
PFL
+
MIL

konik
Svudi *





el c t KONIE 11

10
MAGNETNYI AVTOMAT
100A
1P+N
10kV

100A
100A
100A

100A 100A 100A 100A 100A

GLAVNI VYPINAC
100A
10kV

Technical drawing or wiring diagram on the cabinet door.

10

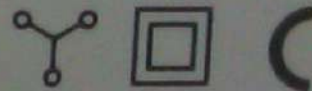
Třífázový elektroměr



0 177489 kWh T1
L1 L2 L3

Naměřená
hodnota energie

Aktivní tarif T1 T2



9041040072955237

ZE 310.D0.14C392-02

Cl.2

TCM 221/03-3934

5(80)A

3X230/400V 50Hz

DDB/DOD

100 imp./kWh

No.72955237

1000 imp./kWh

10/09

Rok 2009



RVO 74 - rekonstrukce



NEKLA VOZOU
AN PENCYVM
HASCNE
PASTRELU





GD 80V1 JCM



HELVIN J571C

The main electrical panel is located in the center and right of the cabinet. It features a vertical busbar system with three rows of circuit breakers. The top row has three breakers labeled '100A 16A', '100A 16A', and '100A 16A'. The middle row has three breakers labeled '100A 16A', '100A 16A', and '100A 16A'. The bottom row has three breakers labeled '100A 16A', '100A 16A', and '100A 16A'. To the right of the busbars, there are two large black components, possibly transformers or relays. Below these are four white cylindrical components, possibly capacitors or filters. A blue box with a circuit diagram is mounted on the right side. A white component with 'HYDRELL' and 'HEBER' labels is also present. The panel is connected to a main busbar at the bottom, which has yellow and green markings. Various wires are connected to the busbars and components.

Warning sign and technical notes on the right door.

071370075782
daisy
TECHNOLOGY
SNo 1370075782



Load

L1 T 10079807
L2
L3



F - System error
T1..2 - Active energy tariff 1..2 [kWh]

P R T2 T1

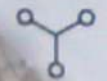
ADX10-AD-U2H-V2X-G1-OK1

13

CE M13 1432

Function

TCM 221/10 - 4781 10000 imp/kWh 1000 imp/kWh



cl. A M1 -33°C to +60°C E2 Scroll/Set

3X230 / 400 V, 0.15 - 5(80)A, 50Hz



Year of manufacture: 2013



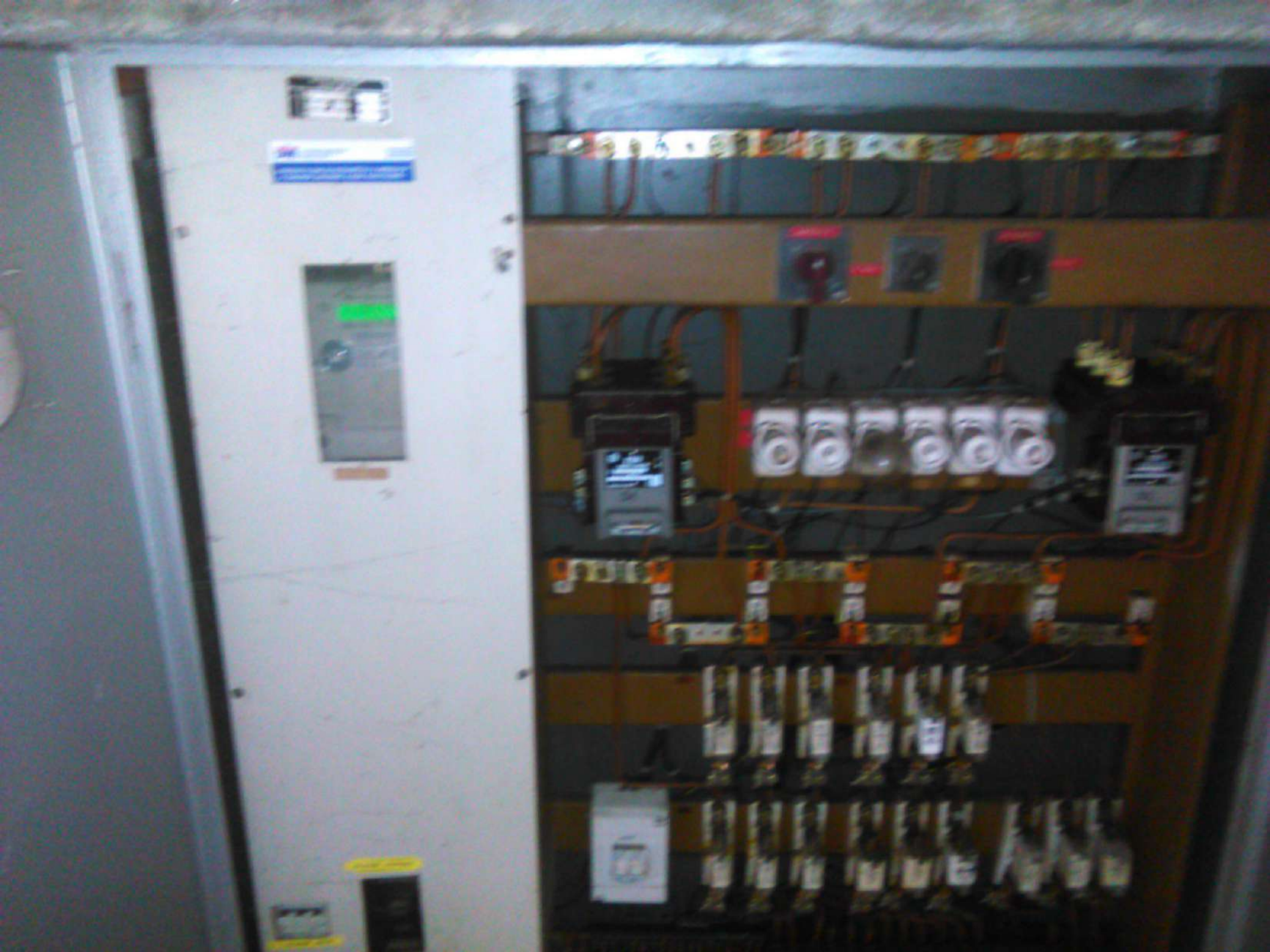
RVOP-75

"IN" ..

Redd!



RVO 75



Třífázový elektroměr

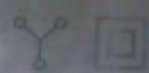
11



00000000^{imp} T2

Naměřená
hodnota energie

tarif T1 T2



9041061074096975

ZE312.D0B1T022-010



0,15-5(80)A
-40/+70°C



No.1074096975

3×230/400V 50Hz
10 000 imp./kWh
100 imp./kWh
TCM 221/09-4624
Cl.A 11/11

CE M1 1383

Rok 25

RVOP-76

690

Veřejný obecní úřad

Frýdek-Místek

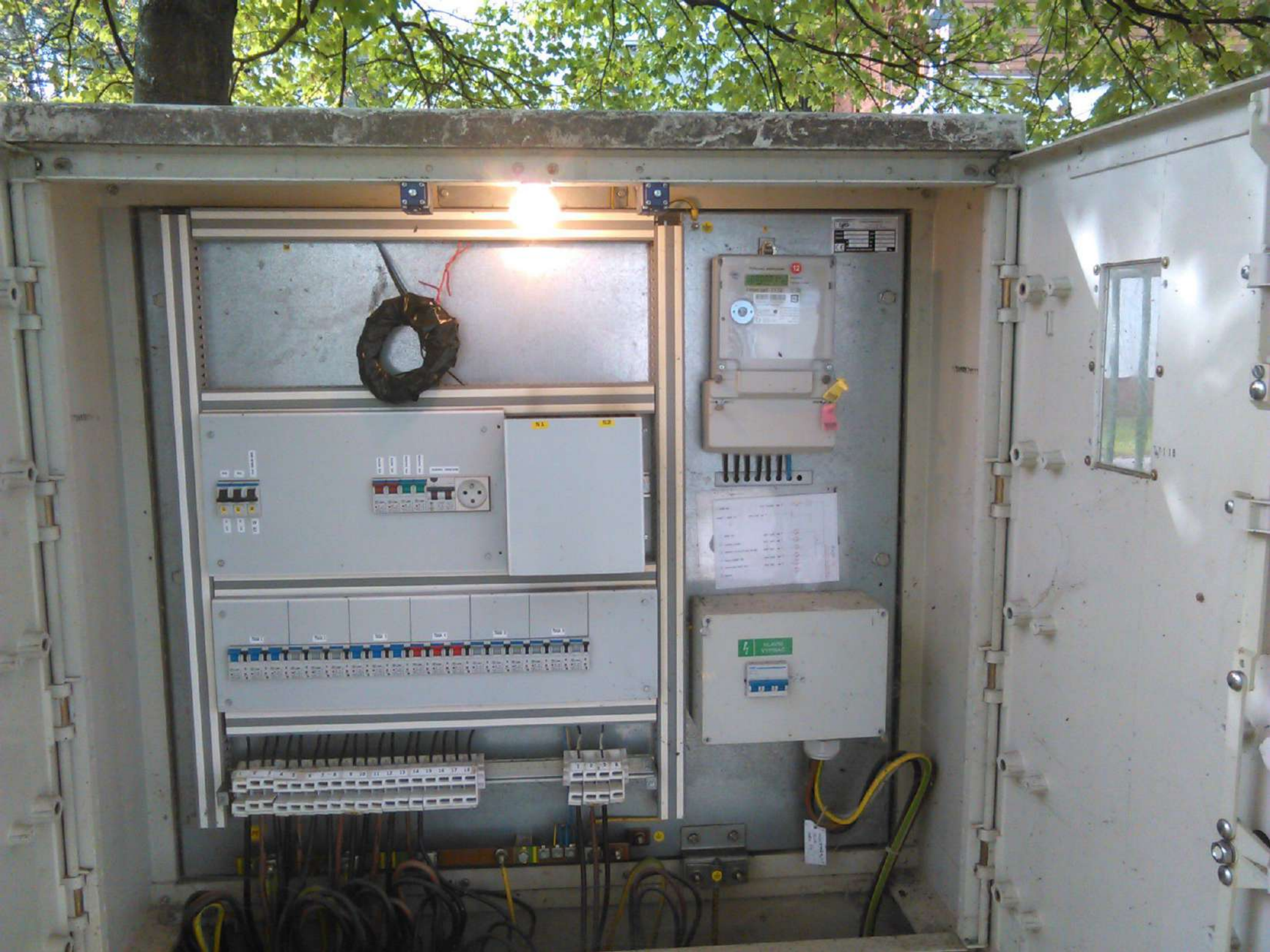
Přístup k této záložce
je postaven Městskou
ulicí Frýdek-Místek



RVON 76-1



RVO 76





PJ

Elektrosazvodiče, s.r.o. Elektro
EIRO 738
 VYR.Č. 2203/7
 ČSN EN 60439-1
 V 400/230
 A 32A
 MAXIMÁLNÍ HMOTN

Třífázový elektroměr

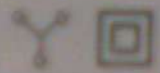
12



0062726^{imp}T1

Naměřená
hodnota energie

Aktivní tarif T1 T2



9041061074375393
ZE312.D0B1T022-010



0,15-5(80)A
-40/+70°C
No.1074375393

3x 230/400V 50Hz
10 000 imp./kWh
100 imp./kWh
TCM 221/09-4694
CIA 05/12
Rok 2012

CE M12 1383